



# An Archaeologist's Toolkit Trail

Follow the Archaeologist's Tool Kit Trail to find all the items a new archaeologist would need on their first Excavation. Use your **BEGINNER'S GUIDE TO ARCHAEOLOGY** to help you:

- \* Look up any words that are **OUTLINED** within your **GLOSSARY**
- \* Tick off the **18** items from your **TOOL KIT** sheet

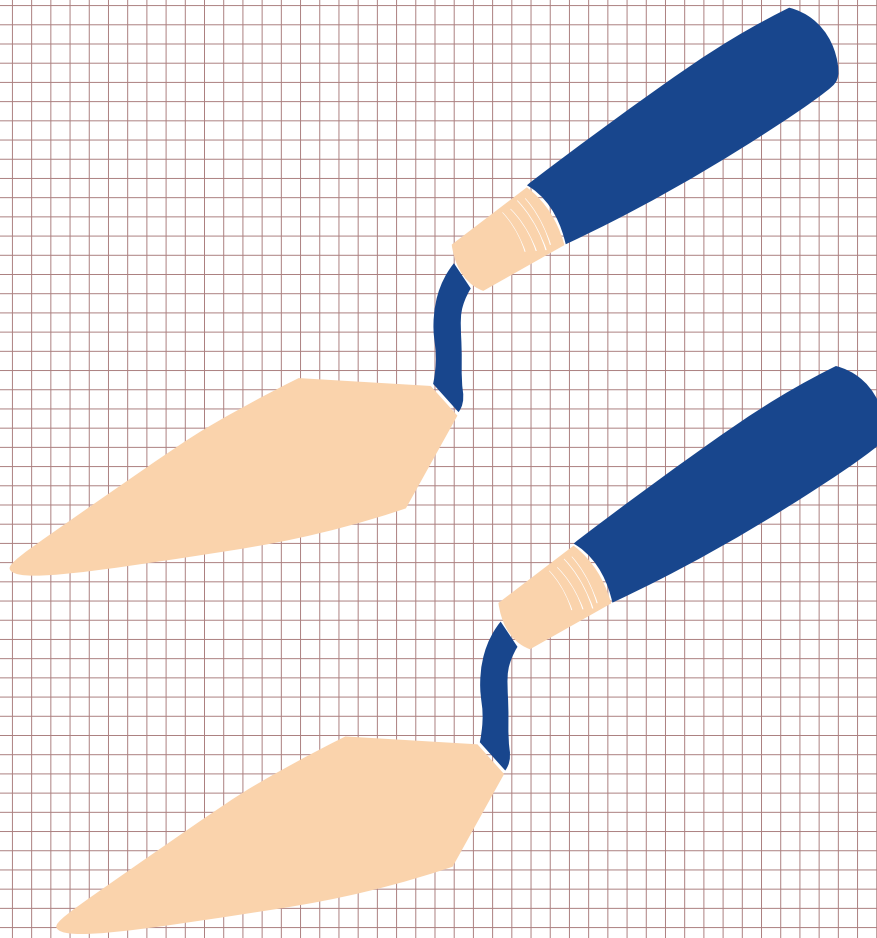


TOGETHER FOR OUR LANDMARK





# Trowel & Back-up Trowel



Use your favourite trowel to scrape back layers of soil as you carefully excavate a trench. Trowels can dislodge any artefacts you might find and excavate archaeological features.

If your favourite trowel is damaged or worn-down while you work, it's always good to have a back-up!

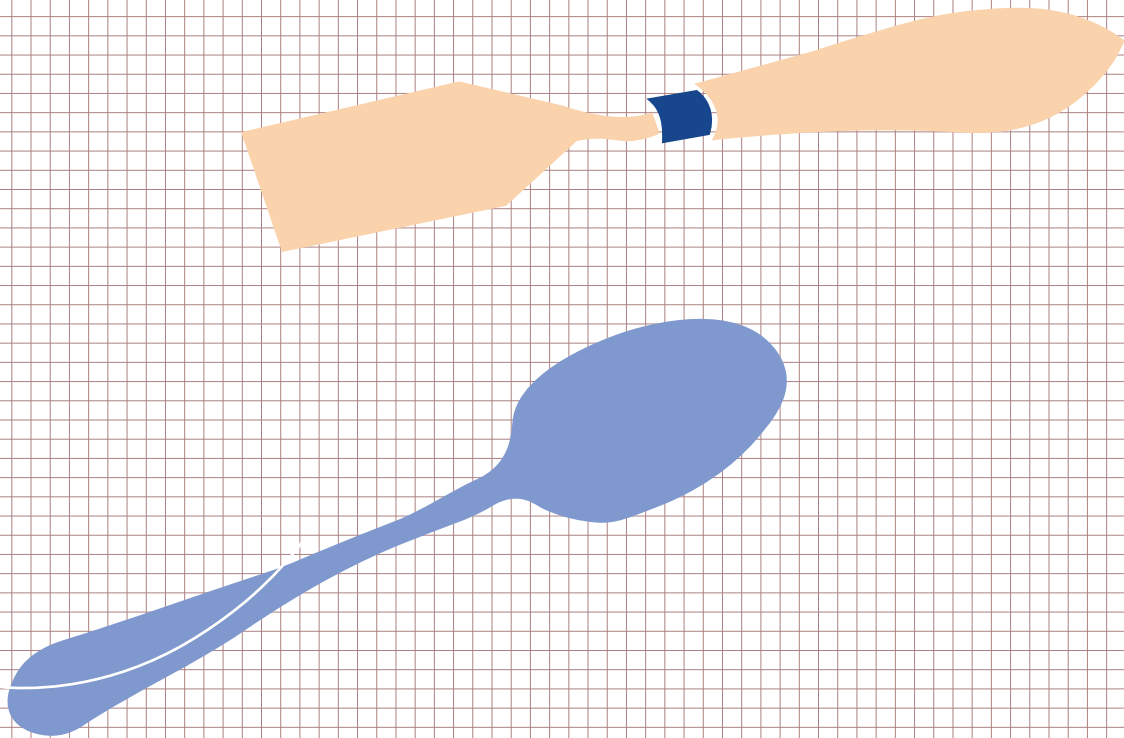


TOGETHER FOR OUR LANDMARK





# Random Utensils



Sometimes you need to excavate a really small or delicate feature, like a post-hole, so you can't fit your trowel in. When this happens, you can use any tool that you think will do the job!

Sometimes archaeologists have even used dessert spoons to get to the bottom of a posthole to excavate it properly!

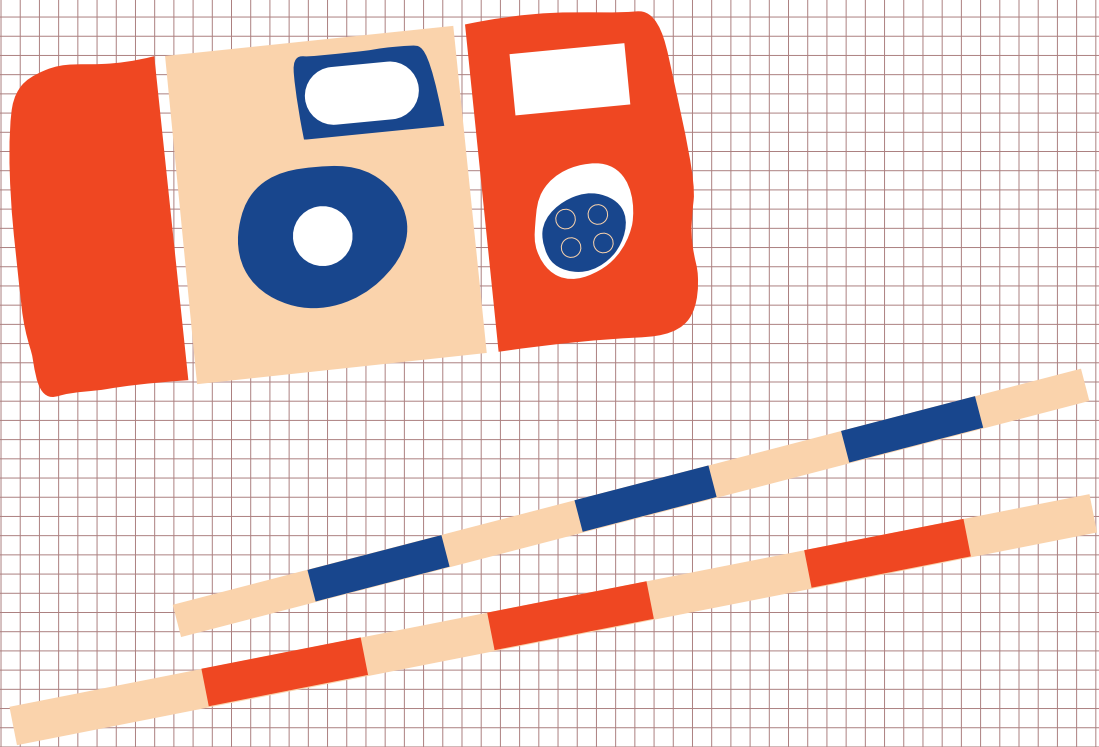


TOGETHER FOR OUR LANDMARK





# Camera & Photo Scale



When you find features in a trench, or when you have excavated a section, you need to take photos with the camera to go in a report about the excavation.

So that you know how big the feature is when you look at the photo, you will need to lay down a photo scale (or a range pole) and make sure it is in the picture.



TOGETHER FOR OUR LANDMARK





# Hand Shovel & Lots of Buckets



While you are excavating in the trench you will need to move a lot of soil. You need a bucket and shovel near you. When you have a pile of soil (called spoil), put it into the bucket.

When your bucket is about half-full you need to take your bucket over to the spoil heap or to the sampling station.

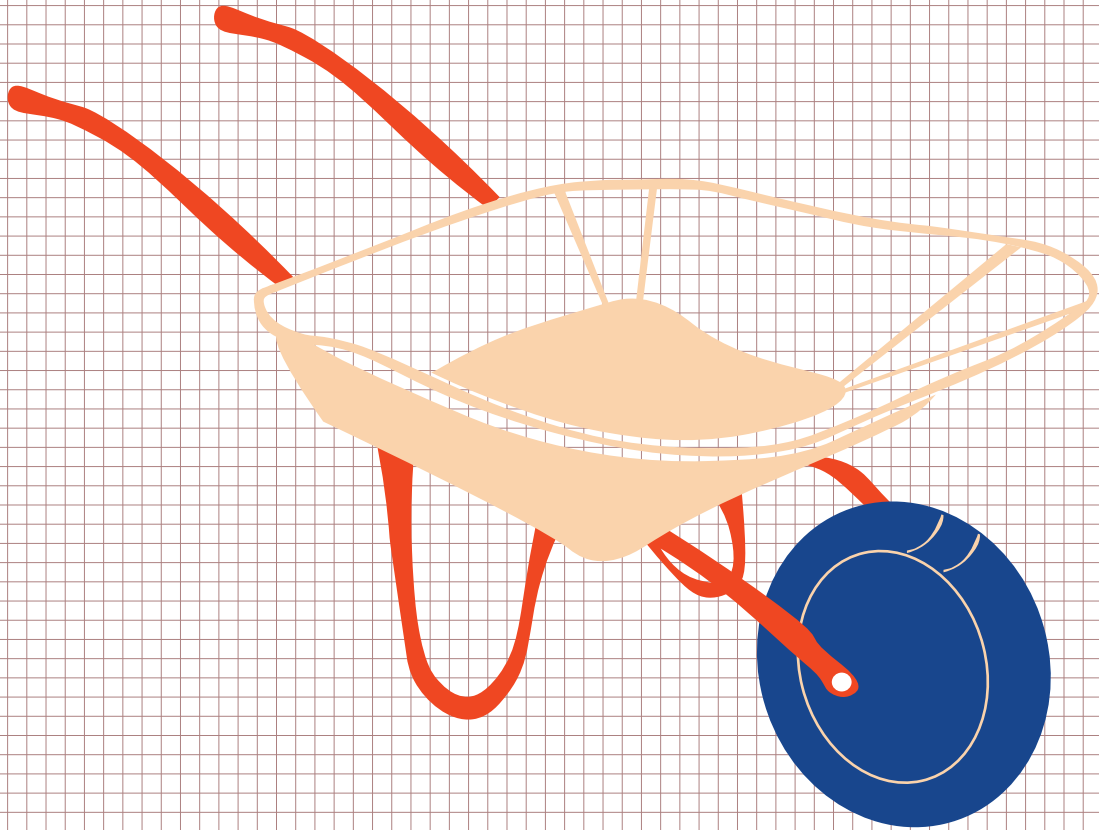


TOGETHER FOR OUR LANDMARK





# Wheel Barrow



Wheel barrows are for moving lots of soil (called spoil) at once when using buckets just isn't enough.

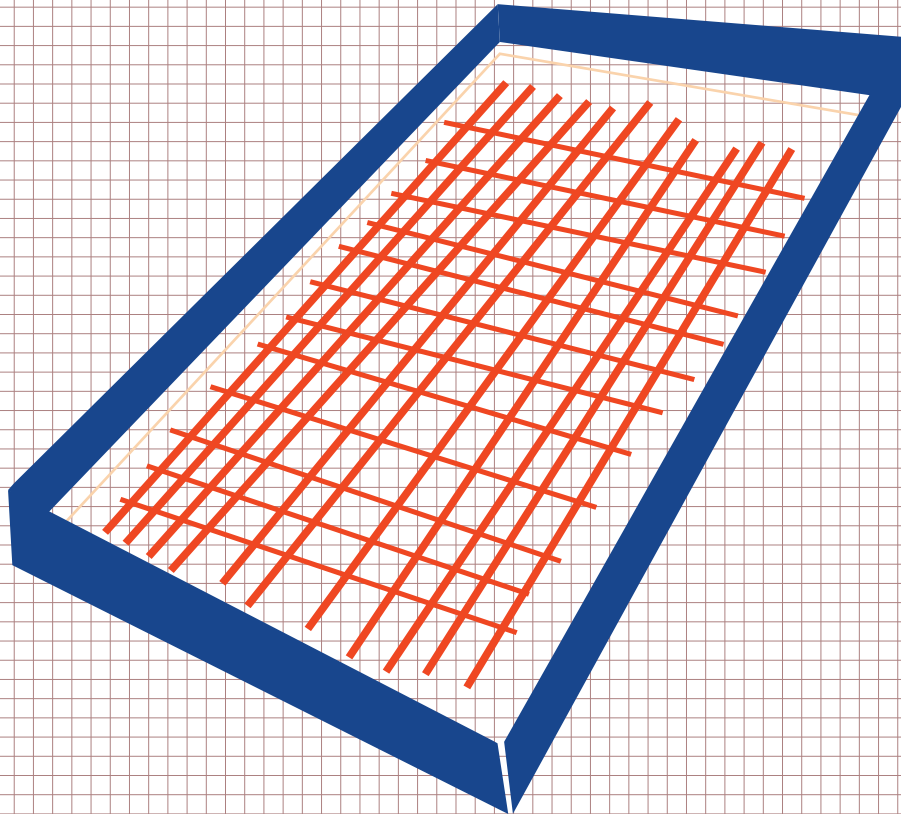
They're good for moving big stones and rocks out of the trench, too.



TOGETHER FOR OUR LANDMARK



# Sifters

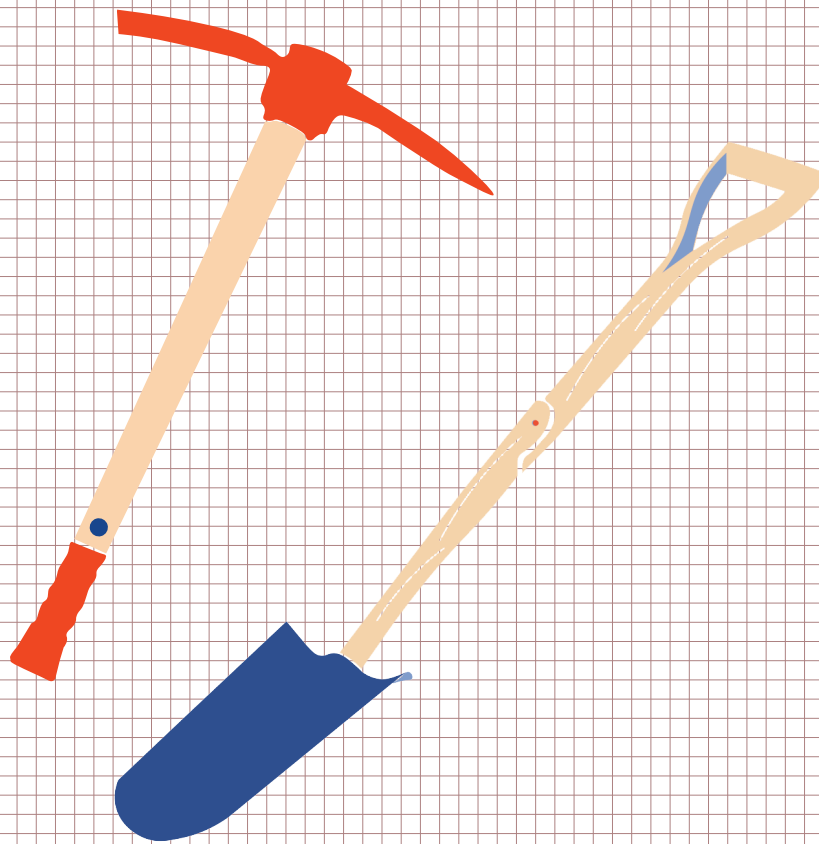


A sifter helps you sift through soil from the trench, which you collected in buckets. This allows you to look for small artefacts that you might have missed when you were in the trench.

Sometimes tiny pieces of artefacts can be found, as well as things that you just didn't see – it's always good to double check your work!



# Mattock & Shovel



You might need to dig through really thick layers of soil, or contexts, to get to the next one. Sometimes, contexts are full of stones and rocks so you can't excavate using your small trowel.

Using bigger tools can dig lots of layers all at one, but remember to be safe and ask that everyone gives you lots of space!



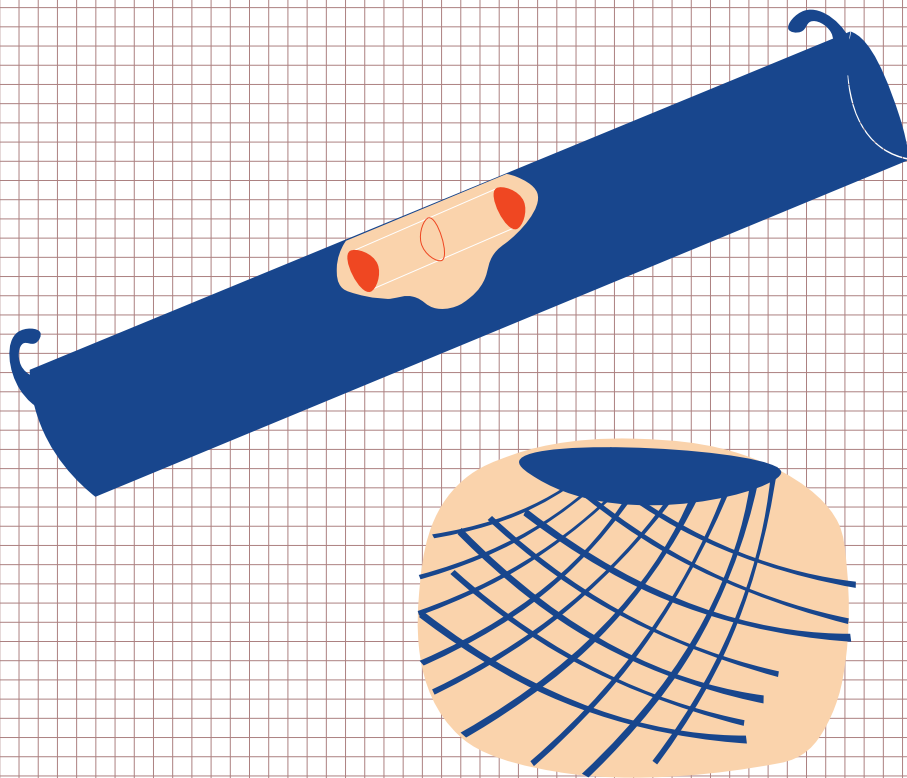
TOGETHER FOR OUR LANDMARK







# Line Level & String / Twine



When you are excavating, there are many times you need to make sure something is straight and level, like when you have done a section and need to draw it.

For this you need some string or twine and a line level. When the bubble lines up in the middle of the line level means you are nice and straight.

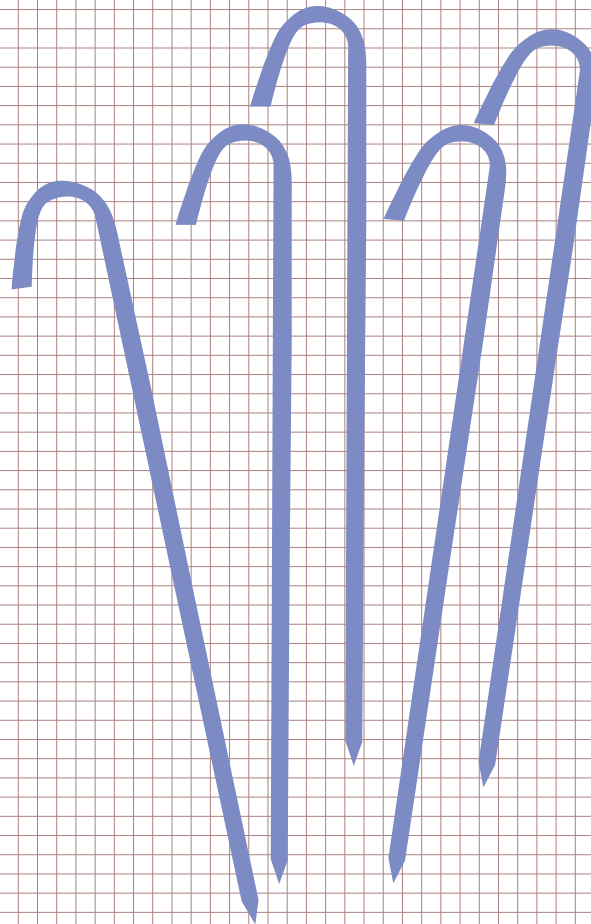


TOGETHER FOR OUR LANDMARK



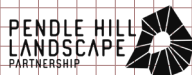


# Metal Pegs



You need metal pegs to mark different contexts so you don't get confused where one ends and another starts. You can put a label on a piece of paper and write the context number onto it.

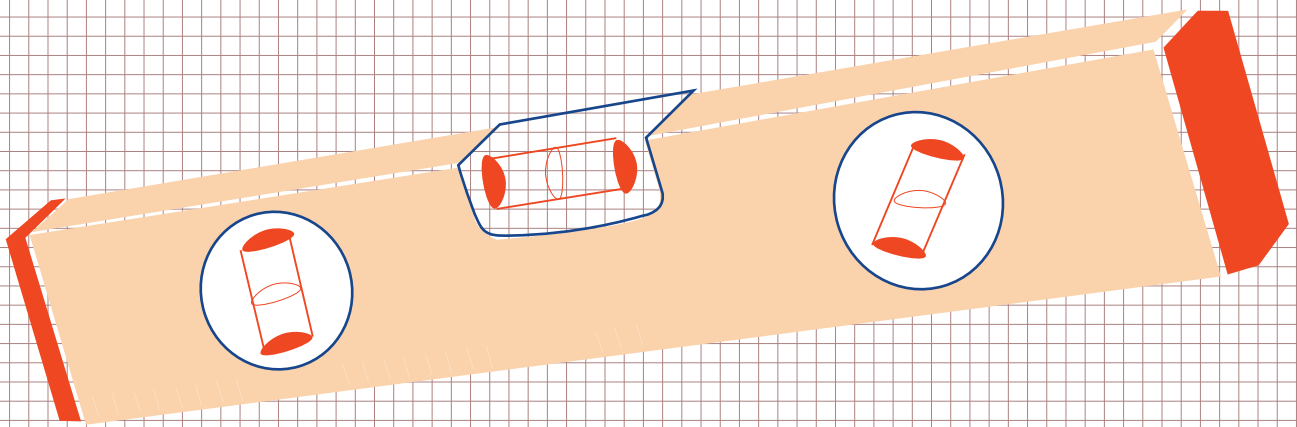
You can also use pegs to mark out different points in your trench, and use them for securing your string or twine.



TOGETHER FOR OUR LANDMARK



# Spirit Level

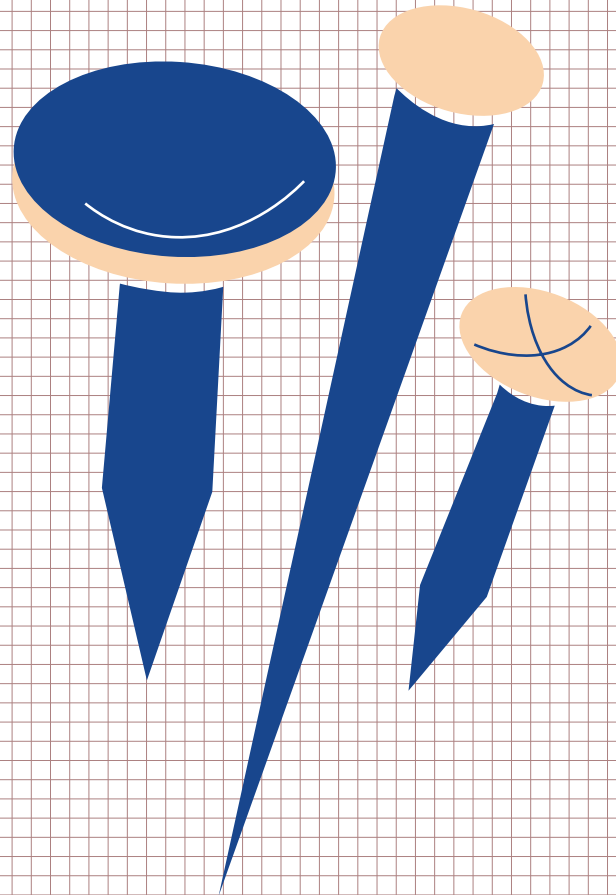


It's handy to have a back-up to your line level, so grab a spirit level, too.

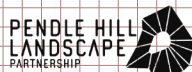
A spirit level is a bit bigger than a line level, as they don't hang from the string, but they're great to make sure things are level.



# Different Sized Nails



Just like the pegs, you can use nails to pin-down labels for your contexts, it's up to you! You can also use them for random jobs that might happen, so it's always handy to have nails that can fix things.



**in-situ**



LUNCHTIME  
PRACTICE

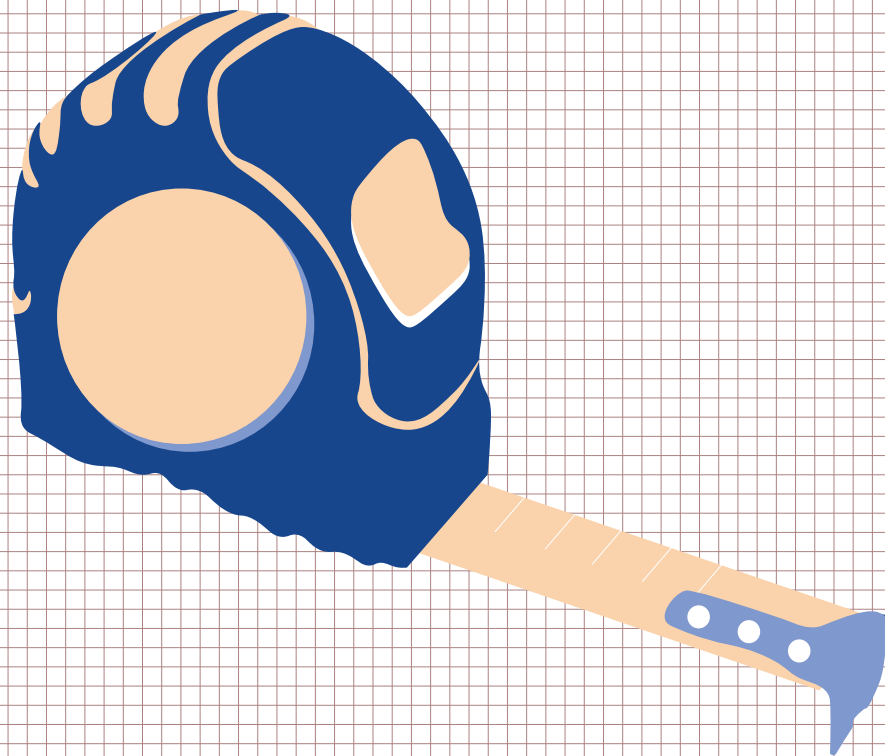


TOGETHER FOR OUR LANDMARK





# Tape Measure



You will do a lot of measuring on an archaeological site, some things will be small and some things might be as big as the trench! So, having these measuring tools is really important.

When you are drawing anything in the trench, you will need the ruler to make straight lines and to make sure everything is in the right place.

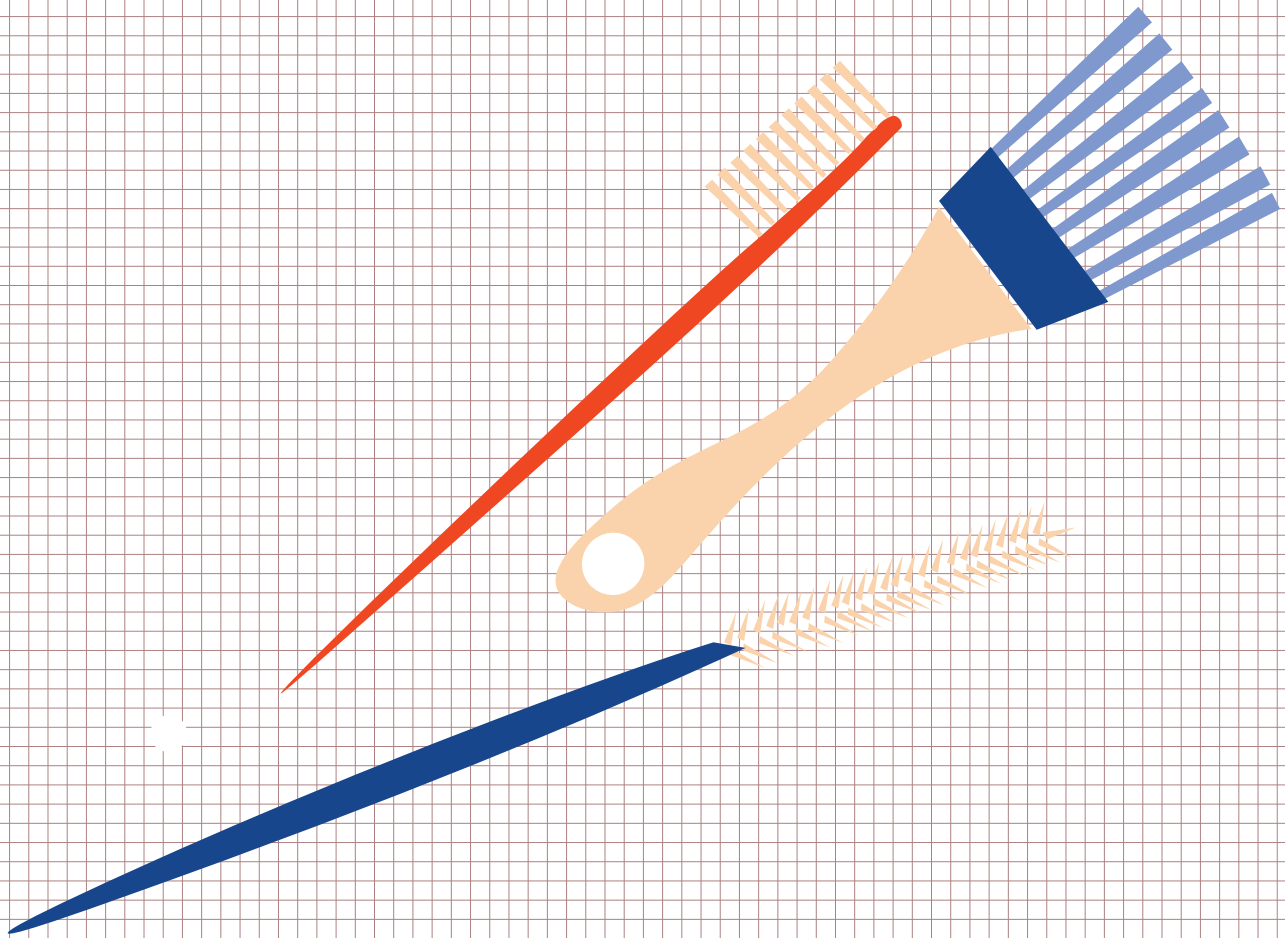


TOGETHER FOR OUR LANDMARK





# Brushes & Toothbrushes



All the artefacts you excavate will probably be quite dirty, so one of the jobs you can do when you're not in the trench is called 'finds processing'.

This is when you clean and sort the artefacts you have found, and believe it or not, toothbrushes are perfect for cleaning most of them!



**in-situ**



LUNCHTIME  
PRACTICE



TOGETHER FOR OUR LANDMARK

